

Chinn,  
Antonia

10/25/3132

FILING NOTES:

FIELD RESEARCH  
S128, S287  
10/11/3132

THOUGHT CONTROL  
C081, C192  
CERTIFIED

IMAGE ACQUISITION  
G202, G002, G314  
10/22/3132

CORRECTION ENFORCEMENT  
L184, L321  
APPROVED

FILING  
D327 10/25/3132

Record No  
FE-092-PE

©2003 WizKids, LLC. All rights reserved. 'Mech and BattleMech are trademarks of WizKids, LLC.

EYES ONLY

CLASSIFIED

CLASSIFIED  
05P



NAME: ANTONIA CHINN

Record No  
FE-092-01

FACTION: Dragon's Fury

DOB: 12/05/3101

REGIMENT: Amaterasu

HAIR: Brown

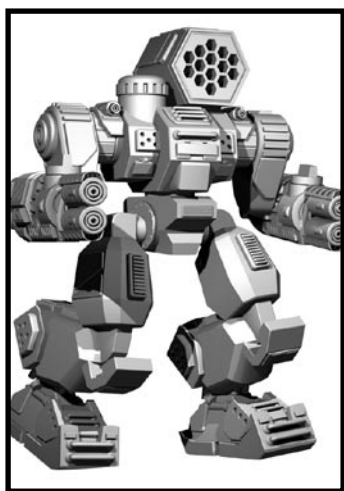
MECH: Thor

EYES: Green

Antonia Chinn is a small, delicate-looking woman with Eurasian features and a soft-spoken demeanor that belies her true nature as one of the Amaterasu's most lethal warriors. A third-generation MechWarrior whose ancestors served both in the original Ninth Sword of Light and the Draconis Combine's elite Izanagi Warriors regiment, Antonia was motivated from birth to take up the family traditions of duty and fealty to the values of the Combine. This drive led to her beginning training - albeit informally - at a young age, and by the time she graduated from formal 'Mech training as a member of The Republic's Militia, she was already rated a veteran warrior. In addition to her 'Mech skills, Antonia is also an excellent field commander and tactician, both in BattleMech warfare and combined-arms engagements.

Antonia, however, is a woman torn by her desire to reconcile the loyalties of her past with the state of The Republic today. When The Republic first formed, then-Coordinator Hohiro Kurita's decision to gift the newborn Ninth Sword to The Republic's armed forces bound its warriors by extension to The Republic, in honor of their liege lord. The chaos in the aftermath of the Sphere-wide HPG crash, however, has left Antonia questioning the values upon which she has based her life. Uncertain of whether forming an independent faction against The Republic would honor the Combine today, or whether it would be a sleight to her ancestors, Antonia seems to be one of Katana Tormark's more reluctant followers. Her reluctance shows more clearly with each passing engagement in which Antonia is in command. She appears to shy away from inflicting heavy casualties on Republic forces, though she will assault members of other splinter factions who have strayed from The Republic's ideals. How much longer Duchess Tormark will tolerate this potentially subversive behavior from the brilliant but questionably dedicated Antonia is a matter of considerable debate.

Record No  
FE-092-01



MECH: THOR

Record No  
FE-092-02

Serial Number: JF900-23C

Mass: 70 tons

Chassis: Olivetti T4 Endo Steel

Power Plant: 350 Magna XL

Cruising Speed: 55 kph

Maximum Speed: 86 kph

Jump Jets: Clan Standard  
Type A3

Armor: Compound Beta FF

Armament:

2 Series 6b ER Large Lasers

2 Series 3a ER Medium Lasers

1 Type Z "Short Bow" LRM-15  
Launcher

Commentary

Record No  
FE-092-02

The *Thor*, known to the Clans as the *Summoner*, was the favored heavy 'Mech used by Clan Jade Falcon when they drove against the Lyran half of the Federated Commonwealth during the Clan invasion. Versatile, highly mobile, heavily armed, and with an excellent damage-to-heat profile, the *Thor* outperformed virtually every heavy 'Mech fielded by the Inner Sphere in that time, gaining almost the same infamy as the fearsome *Mad Cat*. Antonia Chinn's *Thor*, serial number JF900-23C, has been traced back to the dawn of the Clan invasion itself, where it was piloted by one of the Falcons' most unbalanced Crusaders, Nikolai Mathus, until it fell in battle on Somerset and was captured by FedCom troops. The *Thor* has passed through numerous owners since that time, and was actually in the hands of a mercenary unit that hid Combine peacekeepers on Yorik just before the outbreak of the FedCom Civil War. Captured by the Combine defenders, the *Thor* was fielded by the newly formed Ninth Sword of Light, when it was gifted to The Republic of the Sphere.

Antonia Chinn is the fourth pilot of this particular *Thor* since it became part of The Republic militia and later the Dragon's Fury. She has named the machine "Kanazuchi," a Japanese-flavored play on the hammer wielded by Thor, the Norse god of thunder.